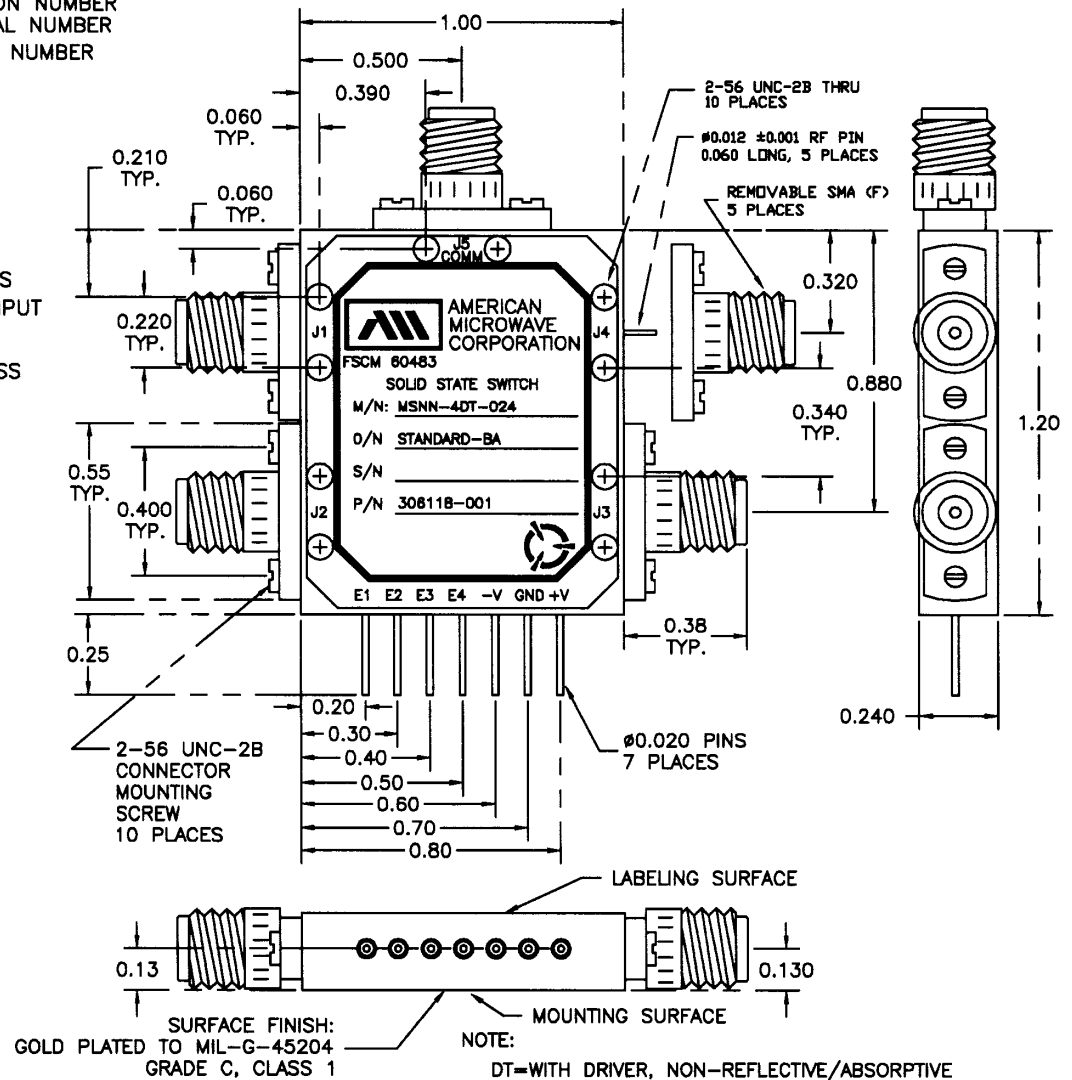


REVISIONS				DATE	APPROVED
ZONE	REV.	DESCRIPTION			
		ORIGINAL RELEASE		7/19/98	

SPECIFICATIONS:

- FREQUENCY:.....0.5 GHz TO 18 GHz
- IMPEDANCE.....50 OHMS (ALL PORTS)
- INSERTION LOSS:.....0.5 GHz TO 6 GHz : 2.0 dB MAXIMUM
6 GHz TO 18 GHz : 3.8 dB MAXIMUM
- VSWR:.....2.0:1 MAXIMUM (INPUT ON, OUTPUT ON, OUTPUT OFF)
- ISOLATION:.....0.5 GHz TO 18 GHz: 40dB MINIMUM
- RF POWER HANDLING:
OPERATIONAL.....A MAXIMUM OF 0.2dB INCREASE IN THE INSERTION LOSS OF A SWITCH ARM IN THE LOW LOSS STATE FOR AN INPUT POWER LEVEL OF PLUS 29 dBm CW OR LESS
SURVIVAL.....NO CHANGE OR DAMAGE IN PERFORMANCE (IN LOW LOSS OR HIGH LOSS STATE WITH INPUT AT THE COMMON OR THE ARM PORT) AFTER EXPOSURE TO AN INPUT POWER LEVEL OF PLUS 32 dBm CW OR LESS
- CONTROL:.....TTL COMPATABLE, 4 INDIVIDUAL CONTROLS
LOGIC "0" = SWITCH "ON"
LOGIC "1" = SWITCH "OFF"
- SPEED:
(50% TTL TO 90% RF) OFF TO ON: 250 nS MAXIMUM
(50% TTL TO 10% RF) ON TO OFF: 250 nS MAXIMUM
- POWER SUPPLY:.....+5V ±5% @ 150 mA MAXIMUM
-15V ±5% @ 80 mA MAXIMUM
- RF CONNECTORS:.....REMOVABLE SMA (F) TO MIL-C-39012 (ALL PORTS)
- WEIGHT:.....LESS THAN 3 OUNCES
- SIZE:.....1.2" x 1.0" x 0.24"
- TEMPERATURE RANGE:.....-40°C TO +85°C

M/N=MODEL NUMBER
O/N=OPTION NUMBER
S/N=SERIAL NUMBER
P/N=PART NUMBER



ENVIRONMENTAL RATINGS:

- TEMPERATURE:.....-55°C TO +85°C (OPERATING)
-65°C TO +125°C (STORAGE)
- HUMIDITY:.....MIL-STD-202F, METHOD 103B COND. B
- SHOCK:.....MIL-STD-202F, METHOD 213B COND. B
- VIBRATION:.....MIL-STD-202F, METHOD 204D COND. B
- ALTITUDE:.....MIL-STD-202F, METHOD 105C COND. B
- TEMPERATURE CYCLE:.....MIL-STD-202F, METHOD 107D COND. A

NOTE: THE ABOVE SPECIFICATIONS ARE SUBJECT TO CHANGE OR REVISION

UNLESS OTHERWISE SPECIFIED
ALL DIMENSIONS ARE IN INCHES
TOLERANCES:
X.XX ±0.010
X.XXX ±0.005

PART NO.		AMERICAN MICROWAVE CORPORATION FREDERICK, MARYLAND	
APPROVALS	DATE	TITLE	
DRAWN WSP	7/19/98	OUTLINE DRAWING MSNN-4DT-024T-STANDARD-BA NON-REFLECTIVE/ABSORPTIVE SOLID STATE SWITCH	
CHECKED		SIZE	REV.
ISSUED		A	
		FSCM NO. 60483	DWG NO. 100-4385-4
		SCALE	SHEET 1 of 1